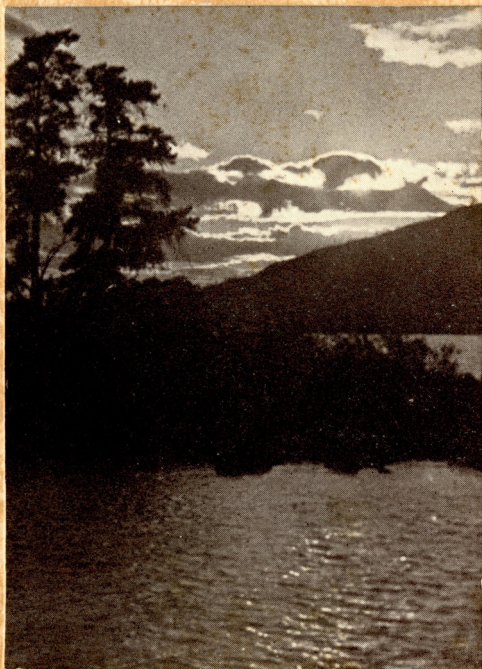
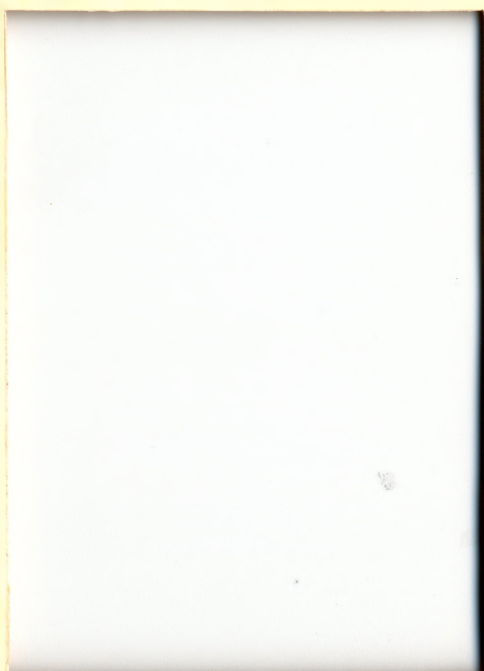
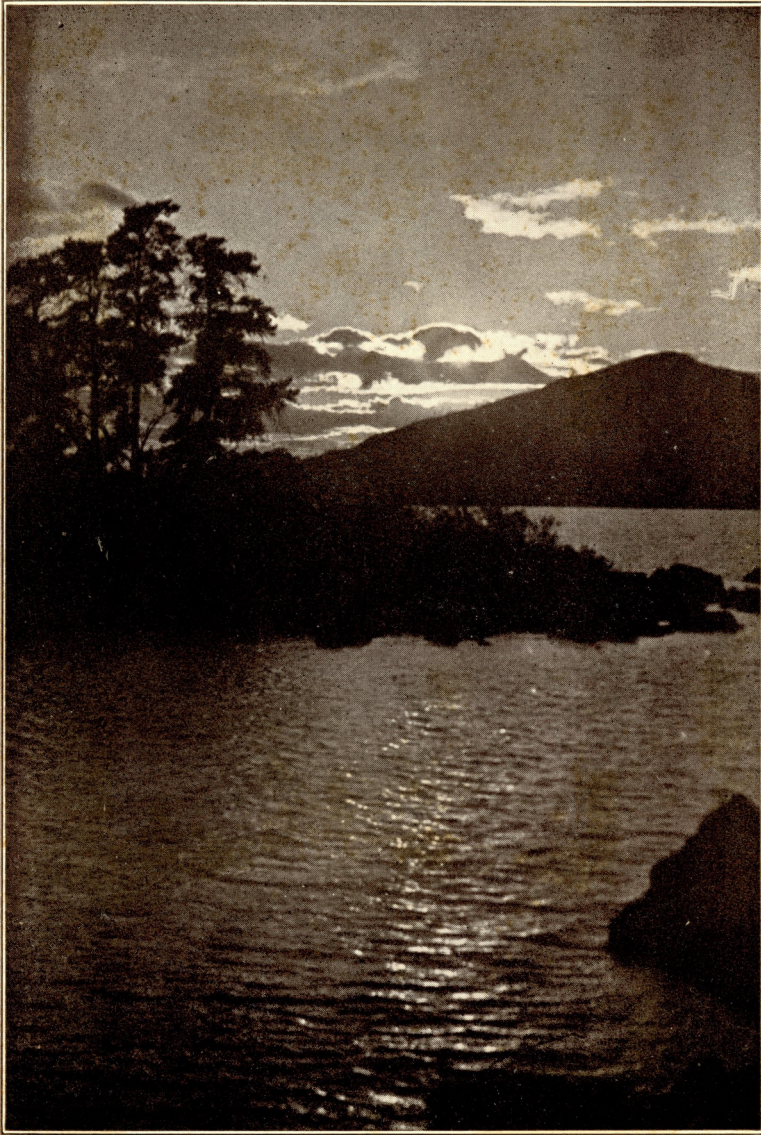


Pamp  
2172



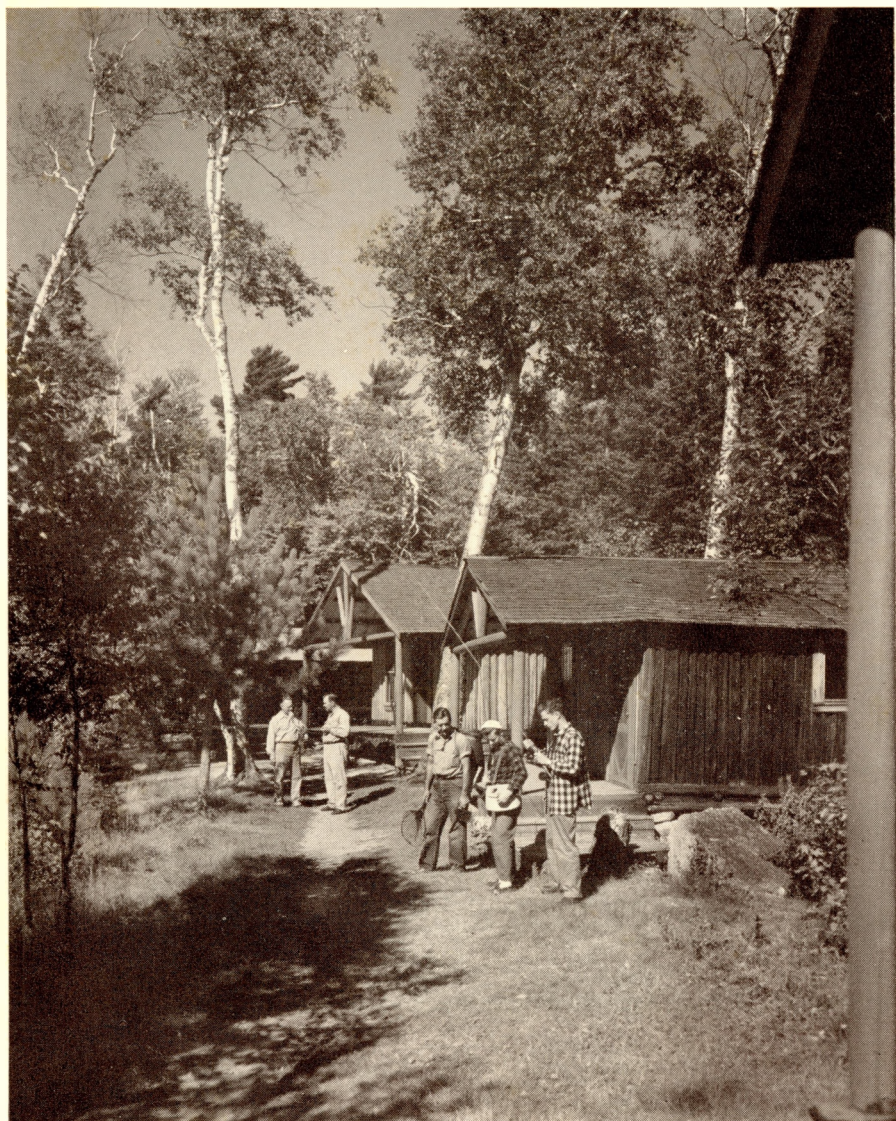
ATTEAN LAKE CAMPS  
JACKMAN, MAINE





**"The sun goes down on Attean,  
But tosses when he flies  
A shower of gems to be scrambled for  
As they tumble down the skies,  
And island, cloud and agile wave  
Do combat for the prize."**

*(Reprinted by permission from "Attean"  
by Louise Helen Coburn.)*



At Attean Camps you have your own individual cabin in the woods with a view off over the lake toward mountains. This path continues around the island, making a quarter-mile circuit through the birch and evergreen forest.

# ATTEAN LAKE CAMPS

Jackman, Maine

*Written by a guest of 35 seasons*



ATTEAN was the name of an Indian chief who roamed these forests many decades ago, but to hundreds of people today the word "Attean" brings to mind a beautiful lake set among the mountains of Northern Maine. To them, the name carries associations of sunny days and cool nights, the fragrance of pine and fir, the rustle of poplars and the lone cry of the loon. Perhaps "Attean" calls up memories of a savage fish on the end of a four-ounce rod, of long glorious days with a guide and canoe, or of the thrill of looking over a far sweep of wild land after a strenuous climb up a mountain trail. To others, the name brings back the scene of snug little log cabins beneath the birch trees and of peaceful days in a rocking chair watching the chipmunks and woodpeckers. To all, however, "Attean" is just another word for a grand vacation.

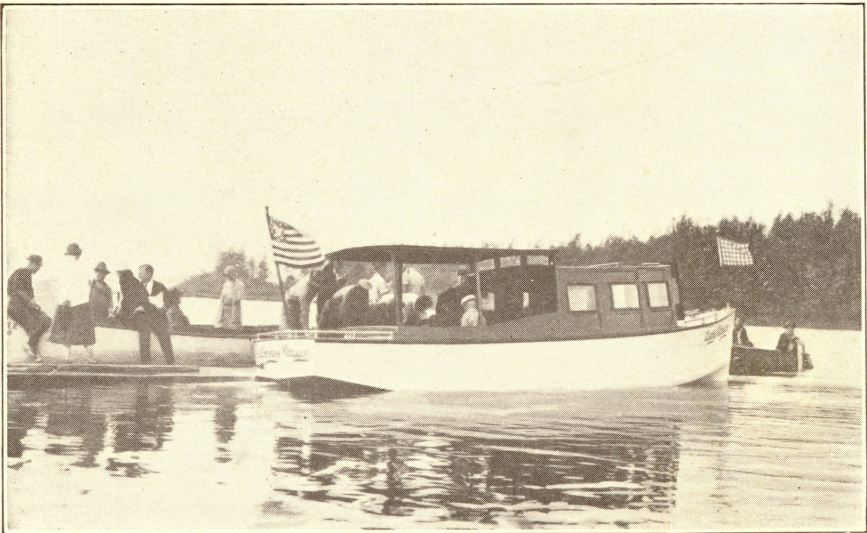


Lake, islands, and mountains compose the Attean scene.



**Above: A mountain-top view of Attean Lake. The camps are located near the white beach on the largest island. The lake contains no other camps or cottages on its shores.**

**Below: One of our motor boats at the dock near the parking area, about to start on its 10-minute trip to Birch Island.**



## CAMPS ON AN ISLAND

That it is possible for the public to enjoy the charm of this picturesque region is due to the presence of Attean Lake Camps under the proprietorship of the Holden Brothers who have literally spent their lives here and are masters in the art of helping people to enjoy the Maine woods.

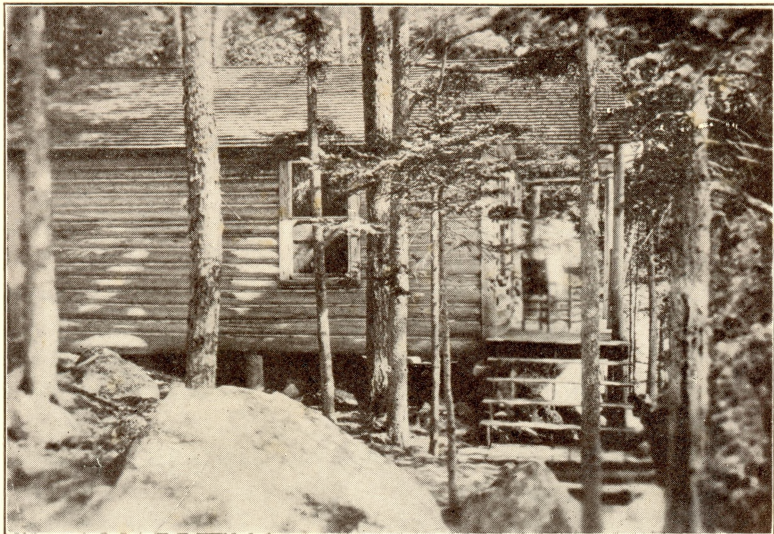
One of the unique advantages of these camps is their location on an island—a fact which insures privacy, quiet, and an unusual freedom from mosquitoes. Every breeze is a lake breeze here. The sound of automobile horns and radio loudspeakers is forgotten.

Birch Island, one of the 42 islands in Attean Lake, is of irregular shape, about three-fourths by half a mile in size, and three-quarters of a mile from the mainland. On it are some two miles of picturesque woodland trails leading to points which afford pleasing outlooks towards the distant mountains. The island is also an ideal environment for children, since they can explore and roam at will without any



Fine sand beaches, rare in northern Maine, abound on Attean Lake. This one fronts our cabins. Note also the beaches across on the mainland.

pruce logs, clean  
and straight, are  
used in this North  
woods architec-  
ure.



Some of our 22  
guest cabins (as  
shown above and  
at left) are  
perched high on  
the rocky shore.

danger of molestation or of getting lost. There is no deep water along the shore and several sheltered coves with wonderful sand beaches offer opportunity for endless hours of play in perfect safety.

Although you can enjoy this feeling of isolation and peace on Birch Island, you can also be in instant communication with the "outside world" by telephone, and ten minutes in a motor launch will take you to your automobile or to the railroad station. Few other camps in the Maine woods so perfectly combine these qualities of remoteness and accessibility.

### COMFORTABLE CABINS

We have 22 guest cabins, accommodating from two to six people in each. They are built out of peeled spruce logs of solid workmanship in the true North Woods manner. Simple and attractive, they contain no fancy "rustic" architecture. The beds are modern and comfortable and each cabin has running hot and cold water and bathroom facilities. All are high above the water level, some overlooking the front beach, and some on a rocky point facing West.



**Wouldn't you like to spend long, lazy, fragrant days on this porch?**



The big fireplace in the Office-Lounge makes a popular gathering place for our guests.



Above: A view of the Office-Lounge, together with a corner of the Dining Camp, an inside view of which appears at the right.



A commodious Office-Lounge occupies a central position. Equipped with writing desks, easy chairs and a great stone fireplace, this is a popular spot after supper when the guests congregate to read their mail and swap yarns.

## BIG APPETITES EXPECTED

Next to the office is the Dining Camp. A one-hundred percent increase in appetite is the normal experience at Attean and we are prepared to satisfy it with plenty of appetizing food in good variety. Fresh vegetables from our own garden and creamy milk from our own Jersey cows, together with prime meats and splendid cold storage facilities assure guests of delicious meals. We put up lunches for those who wish to spend the day away from the island. When you bring home a string of trout, they will be cooked as only those in the Maine Woods know how to do it.

The water which is supplied to every cabin comes from a crystal spring near the summit of Sally Mountain. It was no small engineering feat to pipe this water several miles down the mountain and under the lake to Birch Island, and the fact that it was successfully accomplished by the management is a tribute to Yankee ingenuity.



View from the Dining Camp toward Sally Mountain, source of our drinking water.



**“For its always fair weather when anglers get together.” Below: Many of our women guests find enjoyment in peaceful days with canoe and fishpole.**

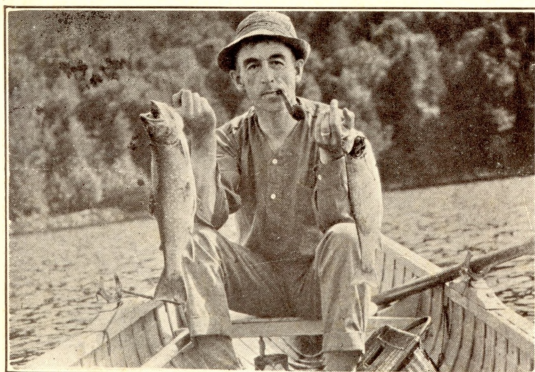


## SPORTSMAN'S PARADISE

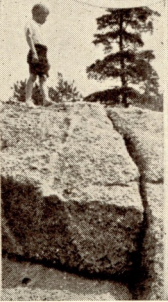
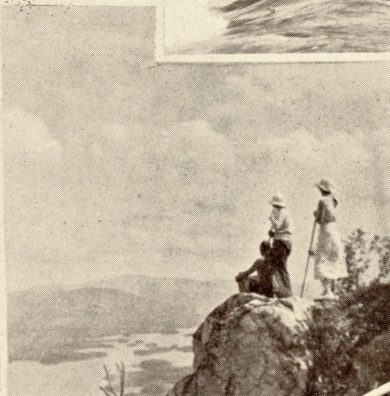
It would be idle simply to claim, along with dozens of other camps, to have "the best fishing in Maine." However, the fact that sportsmen have been coming to Attean year after year is proof of what we have to offer to the fisherman.

Fishing begins when the ice goes out in early May, with the peak of the season in June. Trolling is the popular mode of catching them at this time, and the husky salmon and trout are in a savage mood. As the high water begins to recede, fly fishing becomes more popular, especially in the innumerable ponds, streams and river rapids in our region. In the lake, too, there are deep holes from which canny anglers are able to lure big ones all summer.

We are the only camp on Attean Lake and this whole territory comprising some 17 lakes and many streams, as well as Moose River (one of the tributaries of Moosehead Lake) with its rips and deep holes, is seldom fished except by our own guests. With the cooperation of the State Fish and Game Commission, Attean Lake has been stocked with thousands of small trout and salmon.



These beauties were pulled out of deep holes in the end of Attean Lake known as "The Narrows."



This page, made up from snapshots taken by our guests, shows some of the many ways that all members of the family can have a good time at Attean.

## FUN FOR ALL AT ATTEAN

Fishing is not the only way of enjoying yourself at Attean. Many people come regularly who do little fishing. It is the ideal family resort, because while Father is off fishing, there is plenty for Mother and Johnny to do.

The island trails have already been mentioned. Other and longer trails start from numerous points on the mainland, offering walks of varying distances. Climbers have several rugged mountains to scale, the most popular being Mount Sally overlooking Attean Lake. From this summit hundreds of square miles of forests and lakes can be seen, as well as the two highest peaks in Maine: Mount Katahdin and Mount Bigelow. In all, 85 named mountain tops and 22 lakes can be identified.

Canoeists find the lake particularly attractive because of the many islands and broken shore lines which invite exploration. Often deer are discovered feeding along the water's edge, while moose and bear have been occasionally seen.

The territory offers much interest for those whose hobby is botany, geology, bird study or other form of nature study.

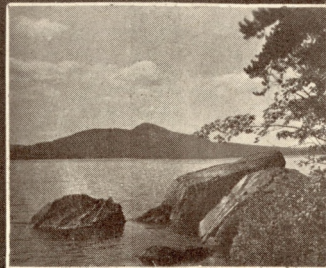
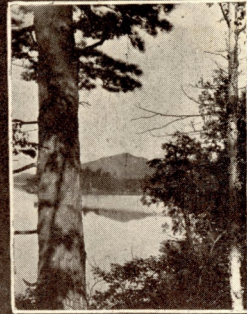
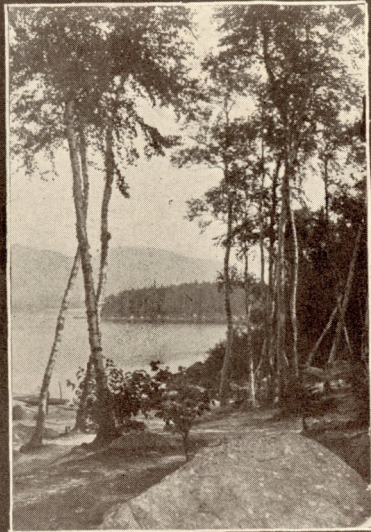
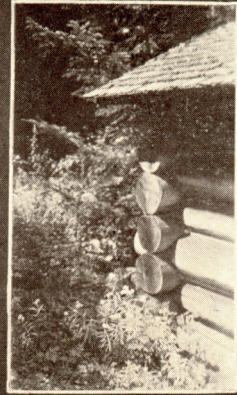
Whenever one wishes a change, the near-by town of Jackman is easily reached for shopping or amusements. There are movies five nights a week and a public dance once a week. Camp motorboats make regular trips to the automobile parking area and are also available at other times.



**Moose photographed  
by a guest**



**Tables and shelters at various picturesque spots on the Lake are available for picnics.**



"The twisted pines of Attean  
Old agonies express;  
The poplars swing their copper curls  
With a glint in every tress;  
The birches' gilded finger tips  
The cool of the lake caress."



## ATTEAN THE BEAUTIFUL

The sheer beauty of Attean is the magnet which draws many of our friends back here season after season. Widely traveled persons have said that it reminds them of such famed scenic spots as the Scotch Lakes or the Inland Sea of Japan. The lake is studded with islands which are bordered with granite rocks of fantastic shapes and capped with wind-swept pines. Mountains of picturesque contour are on all sides. From the morning mists to the evening sunset, Attean is lovely in all her moods. This is why artists and pictorial photographers have been among our most enthusiastic friends.





Each morning sees numerous parties starting out for the fishing grounds



"Cook-outs with a guide who is a skilled cook provide never-to-be-forgotten meals. The reflector oven below has delicious corn-bread baking.



## TRIPS AROUND ATTEAN

Attean is a convenient starting point for canoe trips ranging from over night to several days in length. Experienced guides are available who are expert canoemen, wise to the lairs of trout and salmon, superb cooks, entertaining story tellers, and who know the country intimately.

We maintain cabins for guides and our guests at Holeb Falls twenty miles up the Moose River and close to other fishing waters. Some make the mile-and-a-quarter carry from Attean to Holeb Lake and then follow the river down stream forty miles back to Attean, stopping one or more nights at our Holeb Falls camps. This is popularly known as the "Bow Trip."

Moose River offers many opportunities to the fisherman. Attean Rips, near where it enters the lake, is a rocky cataract with many trout pools. Up the river are such spots as Horse Brook or Three Streams, where "brookies" will rise to the fly. Accessible to our guests by canoe or trail are many ponds, including Clearwater, Benjamin, Horseshoe, Moores, Boulder, Tobey, and others, as shown on the map. The management has placed canoes in most of these waters for the use of guests.

Many guests find their chief pleasure in engaging guides for day trips and "cook-outs." We have built shelters and fireplaces in many picturesque spots, usually near springs. Here, while one takes in the beauty of a spruce-framed vista of blue mountains, his appetite is sharpened by the aroma of sizzling fish or beefsteak, steaming coffee, and cornbread browning in a reflector oven. Such things make for memorable vacations.



One of the two cabins for guests and their guides at Holeb Falls



Attean Lake as seen from the porch of one of our cabins. Below: looking back from the wharf at a few of our guest camps. It can be seen that Birch Island is well named.



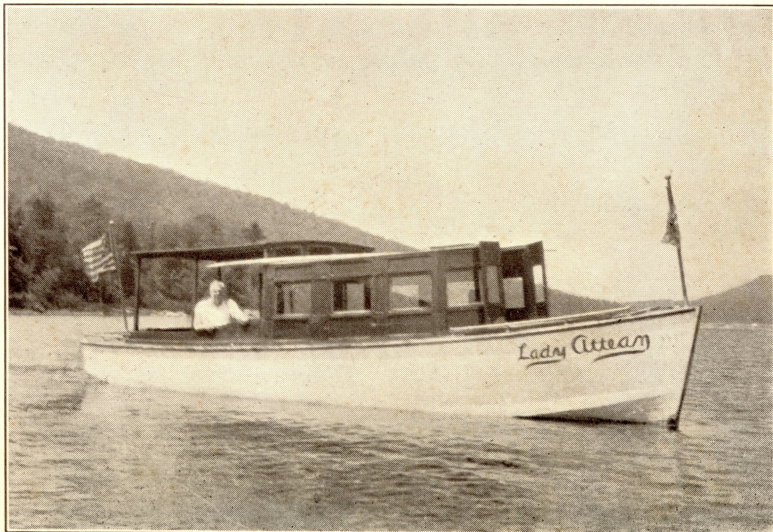
### WHERE IS ATTEAN?

Attean is easily located on road maps as being close to Jackman, Maine, which is the border town on the famed international scenic highway between Portland and Quebec, U. S. Route Number 201.



Jackman is on the Canadian Pacific Railway, and the nearest point on the Maine Central (which has through connections from Boston and New York) is Waterville from which automobile transportation to Attean may be arranged. Waterville is also a passenger stop for the Northeast Airlines.

We have made the camps easily accessible to automobile tourists. Those coming from the direction of Portland may notice a wonderful view from the highway looking out over Attean Lake. Six miles further on, just as you enter Jackman, you will come to a road leading off to the left and marked with big signs "To Attean Camps." This road is followed two miles to the very end which will take you to our boat landing. Garage sheds with individual locked stalls are furnished and a telephone is near by from which you can call up the camp office. A cabin-launch will be immediately dispatched and in a few minutes you will be transported comfortably to Birch Island and Attean Lakes Camps.



"Lady Attean" is ready to take your party quickly and comfortably to Birch Island

## GENERAL INFORMATION

Two mails daily.

Hay fever is unknown.

Reduced rates for children.

There are 42 islands on the lake.

There is a competent physician in Jackman.

Altitude of Attean Lake: 1,200 feet above sea level.

Canoes, rowboats and outboard motors may be hired.

Jackman contains two churches, Congregational and Catholic.

Cars may be kept in a 12-stall garage near the motor boat landing.

There is a Flying Field in Jackman conforming to government regulations.

Metropolitan papers may be reserved for you at a Jackman news stand and delivered daily.

Attean Lake is roughly triangular in shape, about four by five miles across its widest points.

Fishing licenses, supplies and tackle, as well as candy, tobacco and other products are on sale in the office.

In order to insure having the particular cabins that you want, it is desirable to send in reservations as early as possible.

The town of Jackman contains many amusement facilities including first run motion pictures, public dances, cocktail lounges, and a golf course.

Jackman is 13 miles from the Canadian border and 100 miles from Quebec.

For further information, write:

HOLDEN BROTHERS, *Proprietors,*

ATTEAN LAKE CAMPS,

Jackman, Maine.

